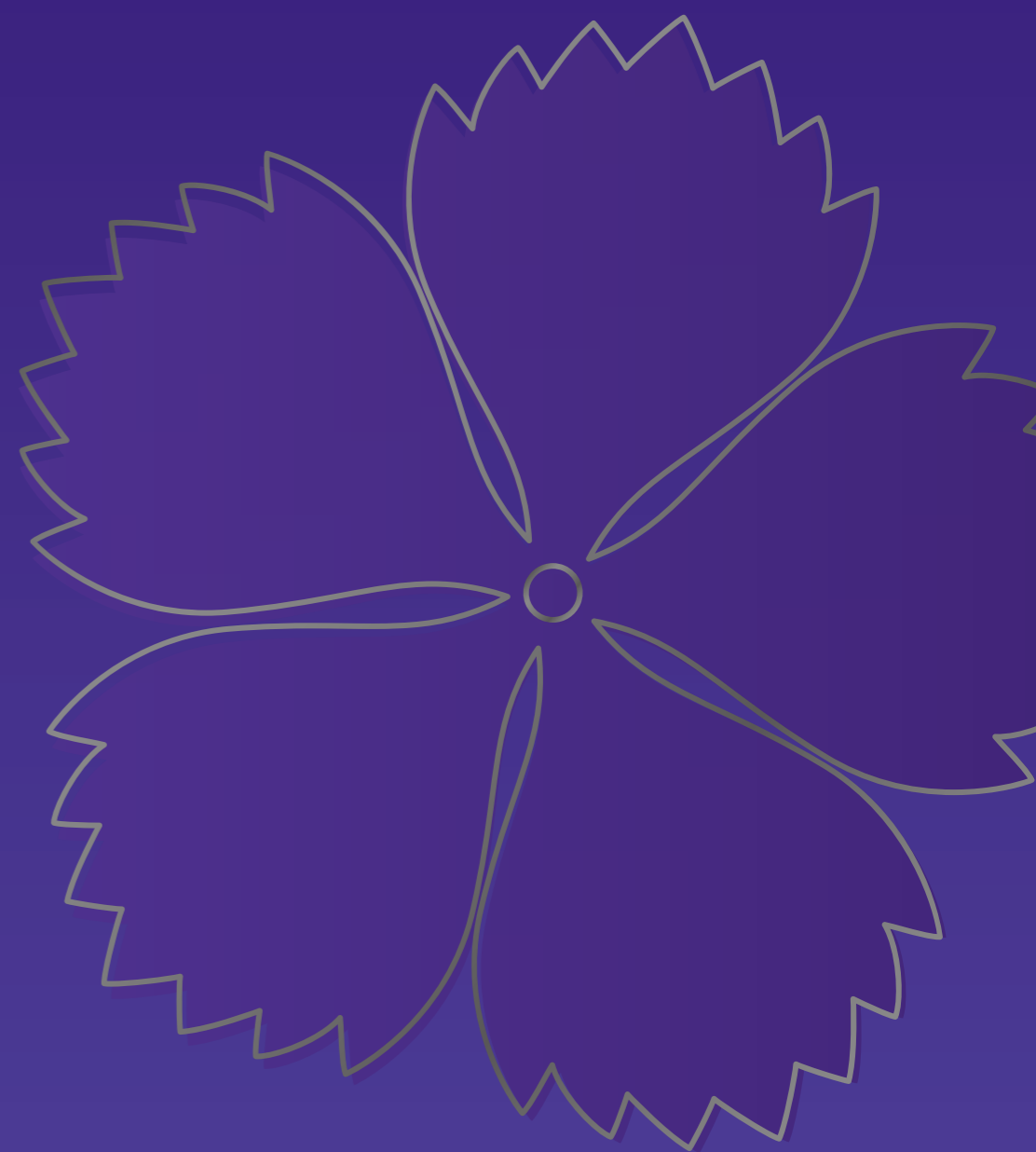


# FWU 2024

FUKUOKA WOMEN'S UNIVERSITY



**FUKUOKA WOMEN'S  
UNIVERSITY**

[Contact]

International Center

1-1-1 Kasumigaoka, Higashi-ku, Fukuoka, 813-8529, Japan

Phone: +81 92 663 4005

Fax: +81 92 692 3208

<http://www.fwu.ac.jp/english/>

# History and Identity

FWU was the first public college in Japan dedicated to the higher education of women. Originally established in 1923 as Fukuoka Prefectural College for Women, the renamed FWU became a four-year university in 1950. Beginning with the faculty of Liberal Arts, the College expanded in 1954 to include the faculties of Literature and Home Economics. The Graduate School of Literature was established in 1993, followed by a doctoral program in English Literature in 1997. The Graduate School of Human Environmental Sciences was created in 2000. April 2006 saw the incorporation of the University as the “Public University Corporation Fukuoka Women’s University.” Globalization and the demands of the times led to a major restructuring of existing faculties in April 2011 under the newly formed International College of Arts and Sciences. The Graduate School of Humanities and Social Sciences and the Graduate School of Health and Environmental Sciences launched master’s programs in April 2015 and doctoral programs in April 2017. Since its establishment, FWU has been a pioneer in advanced education for women in western Japan. It has produced graduates who have gone on to successful careers in various fields where their contributions to improving the status of women and to culture and education have been widely recognized.

<p>1923 Fukuoka Prefectural College for Women opened (Produced 2,267 graduates by March 1951)</p> <p>1950 Re-established as Fukuoka Women’s University; Faculty of Liberal Arts (Japanese Literature, English Literature, Life Science)</p> <p>1951 University relocated to its present site</p> <p>1954 Faculty of Literature (Japanese Literature, English Literature) Faculty of Home Economics (Home Economics (Food Sciences and Clothing), Household Management Science)</p> <p>1993 Graduate School of Literature (Master’s Program in Japanese Literature and English Literature)</p> <p>1995 Faculty of Human Environmental Sciences (Environmental Sciences, Nutrition and Health Sciences, and Living Environment Sciences)</p> <p>1997 Graduate School of Literature (Doctoral Program in English Literature)</p>	<p>2000 Graduate School of Human Environmental Sciences (Master’s programs)</p> <p>2006 Incorporated as Public University Corporation Fukuoka Women’s University</p> <p>2008 “Basic Plan for the Reform of Fukuoka Women’s University”</p> <p>2011 International College of Arts and Sciences</p> <p>2015 Graduate School of Humanities and Social Sciences (Master’s Programs) Graduate School of Health and Environmental Sciences (Master’s Programs)</p> <p>2017 Doctoral Programs for Graduate School of Humanities and Social Sciences and Graduate School of Health and Environmental Sciences</p> <p>2022 Women’s Leadership Center Food Study Center</p> <p>2023 Centennial anniversary of the University’s founding</p>
---	---

## Our Motto

Educating the next generation of female leaders

## Our Principles

- ◆ We give women the wide-ranging knowledge, sound judgment, and flexible thinking needed to help create a better society in Japan and around the world.
- ◆ We create a society where women with vision can play leading roles in world affairs.

## Our Mission

- ◆ We support the development of women who act with initiative and global sensibilities.
- ◆ We produce graduates who will be key actors in promoting scholarship, culture, and life and peace in local communities.



公立大学法人  
**福岡女子大学**  
FUKUOKA WOMEN'S UNIVERSITY

The emblem consists of a star expressing brilliant achievements, an octagonal bronze mirror symbolizing knowledge and virtue, and a white gillyflower signifying women’s virtue.

Carve out a new future, Nadeshiko Flowers!  
-Develop human resources and provide opportunities for learning -

**Centennial**  
We celebrated our centennial in 2023.



# Message from the President

## FWU on the Move

Throughout the long history of Fukuoka Women’s University (FWU), we have cherished a phrase in our college song -- “Travelers seeking truth deep in the forest of learning” -- and have identified ourselves as such. Unlike other women’s universities, FWU has a unique foundation story in that its origin derives from the eager call by Fukuoka’s female citizens for higher education and corresponding vocational opportunities at the dawn of democracy. The university was thus founded in 1923 as Japan’s third public educational institute for women (the two preceding ones are national, while FWU is prefectural). In 2023 we celebrated our 100th anniversary and established two Research Centers (“Leadership” and “Food Study”) to accelerate our academic activities and to make further contributions to society.

While being proud of this background, we have been constantly adapting ourselves to the contemporary milieu and social needs as a beacon in the field of women’s education. The most drastic of these developments came with our 2011 reforms. Under the traditional motto of “Developing Female Leaders for the Next Generation”, FWU was transformed into a brand new institution with a new emphasis on our four principal objectives: encourage critical thinking through practice, enhance communicative abilities, unify arts and sciences, and cultivate internationalization.

With the positive evaluation of our collaborative activities among students, faculty and support staff, FWU has now been placed among Japan’s top three women’s universities in the *Times Higher Education Japan University Rankings*.

If you want to benefit from our reforms and goals, please come and join our academic *guild* and experience the discourse developed around the campus as well as in the classroom. Live together in the International House (NADESHIKO), singing the college song in chorus and enjoy cultural exchange with your international friends. Above all, please be assured that, during your time at FWU, we are prepared to assist and support you in any way that we can.

Tsuyoshi Mukai, M.Ed.  
Board Chairman and President



# Distinctive Features of Our Education

## FWU COMPASS

Developing **People** Who Can Help **Change** the **World**

FWU COMPASS indicates the purpose, system, and methods of our undergraduate education based on the significance of establishing the International College of Arts and Sciences. "Developing people who can change the world" is a condensed expression of the College's educational philosophy. "People = humanity" is supported by the "World = international-mindedness" and "Change = independence". At the center of our education is the philosophy and method of "interdisciplinary education".

## **People** Humanity

### ◆ "Kansei" Education

Our students are able to cultivate their intelligence and sensibility through studying languages, history, culture, environmental science, literature, international relations, food science, arts, the human mind, leadership, and humanities in theory and practice, provided by our "Kansei" program. With the improvement of intelligence, sensibility, creativity and expressiveness, our students experience a revolution of thinking and behavior.

### ◆ Integrated Arts and Science Education

We provide our students with creative and diverse learning opportunities transcending traditional disciplinary boundaries by integrating a wide range of disciplines in the arts and science. It enables our students to opt for minor subjects in addition to major subjects. Under our flexible educational framework, they are able to gain expertise in multiple fields of study and the ability to think in a pluralistic and integrated manner.

### ◆ Tradition and History

FWU's educational policy has been constantly evolving since the establishment of the university in 1923. Our distinctive education has been producing graduates who contribute to society, act as a catalyst in the present world, and create value that can be passed on to the next generation. We will celebrate our centennial anniversary in 2023 and are very proud of the contribution and achievements of our 13,000 plus graduates over the last 100 years.

## **Change** Independence

### ◆ Experiential Learning

FWU is organizing various experiential learning programs on- and off-campus. These learning programs are designed to provide our students with a more hands-on approach to learning that enhances practical skills and can help to resolve various practical issues related to their own lives and the lives of others, as well as local, national and international society.

### ◆ Education in the Dormitory

All FWU students live on campus for their first year, while students from overseas stay in residence for four years. This arrangement allows our students to enjoy the opportunities to communicate in foreign languages and exposes them to diverse values and ways of thinking. Living in the dormitory provides a valuable educational experience to our students that develops their independence and ability to form strong relationships with other dormitory residents, as well as cultivating cross-cultural understanding.

### ◆ Small Class Sizes

Most of our classes are small-sized. Focusing on the benefit of small classes, we provide our students with a productive learning environment that deepens learning based on a mutual understanding between teachers and students. Students are able to develop practical communication skills and skills to proactively resolve various issues through discussion with a teacher, group discussion, and delivering presentations. In addition, students' learning is supported by a first-year seminar, an academic advisor system, and learning portfolio that is used to visualize and monitor each student's individual learning outcomes.

## **World** International - mindedness

### ◆ Study Abroad Experience

We provide our students with a wide range of long- and short-term study abroad programs in collaboration with overseas partners aimed at developing a students' global awareness. About 80% of our students participate in such programs prior to their graduation.

### ◆ Communication in Foreign Languages

The Academic English Program, the English Village Program, a shared dormitory for international and Japanese students, and other programs are offered to develop international communication skills and competence amongst all of our students.

### ◆ Quarter System

The quarter system improves learning efficiency through an intensive twice-per-week teaching format. It can increase the flexibility of the academic calendar and encourages students to study abroad or participate in an internship program during one quarter.



# International College of Arts and Sciences

## International Liberal Arts

### Japanese Language and Culture

This course aims to educate students who can communicate Japanese culture from a perspective that values diversity and understands the globalizing world. A broad range of classes on Japanese culture and history are offered, along with specialized courses on Japanese literature, language and language education. Future career paths include jobs in the media, cultural exchange organizations, and Japanese language teaching.

### International Relations

The globalized society in which we live is characterized by numerous cross-border issues related to the environment, conflicts, poverty, terrorism, refugees, and development. Focusing on these issues, students learn about the theory and history of international relations, as well as conflict resolution methods and practice, which hold the key to finding solutions. Career opportunities include roles in international organizations, government bodies such as the Ministry of Foreign Affairs, cultural exchange organizations, NPOs and NGOs, international corporations and the media.

### European and North American Languages and Cultures

This course broadly surveys the literature, languages, philosophy and history of Europe and North America, particularly the U.S., Britain, France and Germany, regions that have strongly influenced today's global democratic society. Students cultivate the analytical and intellectual strengths needed to get a multi-faceted cultural understanding of the principles that drive modern international society. By learning about North American and European societies, they gain a comparative perspective on Japan. The course fosters people with pluralistic views and advanced communication skills who can be key actors in international society. Career opportunities include work in international institutions and corporations, international departments in public and private organizations, the media, travel and tourism, and English language teaching.

#### Graduates are eligible for the following certifications

- First Class High School Teacher's License (Japanese)
- First Class Junior High School Teacher's License (Japanese)
- Teacher-Librarian Qualification
- First Class High School Teacher's License (English)
- First Class Junior High School Teacher's License (English)

### International Economics and Management

In addition to providing basic knowledge of international society and culture, the course examines Japanese and foreign economic systems, economic relations and organizational management. Students develop competencies in international economic negotiations and corporate management. Potential careers include work in trading companies that do business with Japan or economic exchange organizations.

### East Asian Research

Students study the languages, cultures, laws, politics, societies, and economics of East Asia, comprising Japan, China, Korea, Taiwan, and Southeast Asian countries, to gain a comprehensive, multi-faceted understanding of this dynamic region. Applying the skills and knowledge they have acquired, students strive to promote intra-regional exchange and the development and security of the East Asian region. Career opportunities include roles in international organizations, cultural exchange organizations, NPOs and NGOs, and international corporations.

## Environmental Science

### Environmental Substances

The aim of the course is to develop an understanding of the characteristics of chemical substances in the environment and the ability to chemically evaluate and analyze environmental problems. Potential career fields include chemical analysis (companies that require environmental measurement or pollution prevention management; companies that conduct environmental analysis) and environmental analysis (wastewater treatment companies, etc.)

### Life and Environment

This course examines the effects on the eco-system and human health of environmental changes stemming from the composition and function of living organisms and human activity. Career paths include work in fields that require biotechnology skills, such as agriculture, food processing or pharmaceuticals, or in the field of environmental conservation (companies involved in greening and Environmental Impact Assessments).

### Lifestyle and the Environment

The course focuses on the interaction of people's lifestyles with social and natural environments in Japan and overseas. Potential career paths include the environmental systems field (companies involved in eco-system development, comprehensive environmental assessments, or consulting; energy- and recycling-related businesses), and the field of living environment design (companies involved in air conditioning, lighting, and living spaces)

### International Environmental Policies

Students develop the analytical skills needed to propose environmental policies both in Japan and overseas, as well as the ability to think comprehensively and to analyze environmental issues from an economics perspective. Career possibilities include the fields of environmental policy (for national or regional governments, businesses, and other organizations that require environmental certificates such as ISO), planning (corporate planning divisions) and environment-related businesses or foreign and domestic NPOs and NGOs.

#### Graduates are eligible for the following certifications

- First Class Junior High School Teacher's License (Science)
  - First Class High School Teacher's License (Science)
  - Teacher-Librarian License
- Eligibility to take Second Class Registered Architect (Kenchikushi) Examination (Eligibility is scheduled to be available for students entering in the 2018 academic year.)

## Food and Health Sciences

The major changes transforming our society are accompanied by challenges with regard to diet and nutritional problems in various parts of the world.

We need people who can deal with the domestic issues of food safety and dependence on foreign supply, as well as international issues such as food shortages in developing countries. The objective of the course is to give students the skills and expertise needed to help solve these issues. In addition to acquiring relevant knowledge of environmental science and international society, students have the opportunity to take the registered dietitian examination, enabling them to begin a professional career immediately upon graduation.

#### Graduates are eligible for the following certifications

- Eligibility to take national examination for National Registered Dietitians (RD)
- Dietitian License (English)
- First Class Nutrition Teacher's License
- Food Sanitation Supervisor (Appointment qualification)
- Food Sanitation Inspector (Appointment qualification)



# Graduate Schools

FWU opened its Graduate School (master's program) in April 2015 in order to fulfill its educational philosophy of producing female leaders for society by giving students the opportunity to hone the skills developed in undergraduate studies and acquire a higher level of expertise. Doctoral programs based on the areas of specialization in the master's programs were established in April 2017 with a view to cultivating experts with wide-ranging experience and global perspectives who can play leading roles in Japan and overseas.

## Graduate School of Humanities and Social Sciences

### Master's (Literature, Social Science)

The Graduate School of Humanities and Social Sciences offers two areas of specialization, "Language and Culture" and "Social Sciences." The master's program aims to cultivate high-level professionals with the specialized knowledge and practical skills required in today's globalizing world, where local culture, society, economics, and law closely influence each other.

#### Graduates of the program are eligible for the following certifications:

- Junior High School Specialized Teacher's License (Japanese), High School Specialized Teacher's License (Japanese)
- Junior High School Specialized Teacher's License (English), High School Specialized Teacher's License (English)

#### ■ Specialization in Language and Culture

Two courses are offered: "Japanese Language and Culture", and "Language and Culture in the English-speaking World." Students acquire a deep understanding of the body of linguistic and cultural knowledge accumulated in Japan and in English-speaking regions, and a critical research approach enabling them to reconstruct that knowledge from a global perspective.

#### ■ Specialization in Social Sciences

Two courses are offered: "International Industrial Society" and "International Relations." The courses nurture high-level professionals who can elucidate wide-ranging and diverse phenomena of international society from economic and political perspectives in ways that have real-world applications.

### Ph.D. (Literature, Social Sciences)

The doctoral program cultivates high-level professionals with the specialized knowledge and practical skills required in today's globalizing world, where local culture, society, economics, and law closely influence each other.

#### ■ Specialization in Language and Culture

##### Graduate profile

- 1) Outstanding educators and researchers who can be leaders in literary, cultural and linguistic fields in Japan and in English-speaking regions.
- 2) People with insight and multicultural understanding along with superlative linguistic skills who can play active roles in Japan and overseas.

#### ■ Specialization in Social Sciences

##### Graduate profile

- 1) Highly creative educators and researchers who can be leaders in political and economic fields in Japan and overseas.
- 2) Practitioners who possess deep insight and advanced political and economic expertise, who can play active roles and offer new solutions in international society.



## Graduate School of Health and Environmental Sciences

### Master's (Health and Environmental Sciences)

The program contributes to the development of "health and environmental sciences" aimed at "creating a healthier society in harmony with the environment" from the perspective of health science and environmental science, and the natural sciences that underlie them. It does so by integrating the disciplines of health science, home economics, physical science, engineering, and social science. To that end, the program has established areas of specialization in Natural Sciences and Environment, Nutrition and Health Sciences, and Environmental Management, based on an educational philosophy of nurturing highly creative graduates with advanced knowledge and research skills.

#### ■ Specialization in Health and Environmental Sciences

Three areas of specialization are offered: Natural Sciences and Environment, Nutrition and Health Sciences, and Environmental Management.

The program produces graduates who understand the specialized knowledge and technologies involved in "creating a healthier society in harmony with the environment," and who have acquired the competencies required to engage in innovative and pioneering research. Those who complete the program are expected to pursue paths where they can play key roles as internationally minded professionals equipped with practical skills.

### Ph.D. (Health and Environmental Sciences)

#### ■ Specialization in Health and Environmental Sciences

##### Graduate profile

The program encourages far-reaching viewpoints and cultivates problem-solving abilities, while providing research guidance, with the aim of nurturing graduates who can carry out independent research, comprehensively evaluate the results, and take the lead in creating interdisciplinary fields. Our goal is to foster women who will be at the forefront of their research fields, equipped with the wide range of knowledge and skills needed to conduct interdisciplinary research, and who will be core professionals in various social spheres.

#### Graduates of the program are eligible for the following certifications:

- Specialization in Natural Sciences and Environment: Junior High School Specialized Teacher's License (Science), High School Specialized Teacher's License (Science)
- Specialization in Nutrition and Health Sciences: Specialized Teacher's License in Nutrition



# International Collaboration

## Overseas Partners : 32 universities in 20 countries/regions around the world

FWU promotes international partnerships with overseas universities throughout the world in order to nurture globally active young women with diverse points of view and ideas. The International Center of FWU has played a key role in developing a number of programs to promote international partnerships and enhance international opportunities for students, faculty, and staff.



For more about our international programs, please visit:  
<http://www.fwu.ac.jp/international/>

### Asia

#### China

- Tongji University, College of Foreign Languages and Women's College
- Dalian University

#### India

- University of Delhi, Lady Shri Ram College for Women

#### Indonesia

- Gadjah Mada University
- IPB University

#### Malaysia

- University of Malaya
- University of Putra Malaysia

#### Philippines

- Ateneo de Manila University

#### South Korea

- Ewha Womans University
- Pusan University of Foreign Studies
- Dong-A University
- Seoul National University, College of Human Ecology

#### Sri Lanka

- University of Peradeniya

#### Taiwan

- Tamkang University
- National Dong Hwa University

#### Thailand

- Chulalongkorn University
- Thammasat University
- Mahidol University

#### Vietnam

- Vietnam National University, Hanoi

### Oceania

#### Australia

- Federation University

### Europe

#### Belgium

- University of Leuven

#### Croatia

- Juraj Dobrila University of Pula

#### Germany

- University of Munich

#### Iceland

- University of Iceland

#### Poland

- University of Warsaw, Faculty of Geography and Regional Studies

#### Romania

- West University of Timisoara

#### U.K.

- The University of Manchester, Faculty of Humanities
- Keele University

### North America

#### Canada

- University of Prince Edward Island

#### U.S.A.

- Spelman College
- University of Hawai'i West O'ahu
- University of Georgia

As of April 1, 2024

## The Consortium of Asian Universities in Fukuoka (CAUFUK)

The Consortium of Asian Universities in Fukuoka (CAUFUK) was established in 2011 in collaboration with leading partner universities in Asia. After discussion among senior level administrators from partner universities in July 2011, CAUFUK was formally inaugurated at a signing ceremony in November. Joint research projects were launched under the themes of "Environmental Problems in Asia," "Nutrition Management

in Food Safety and Times of Crisis" and "The Role of Asian Women in a Sustainable Future." In November 2014, 54 researchers and staff from 12 universities in seven countries gathered to announce achievements related to the research in Fukuoka. Eleven universities from six Asian countries participated in the announcement.

## The Consortium of ASEAN-EU-Fukuoka Universities (CASEUF)

The Consortium of ASEAN-EU-Fukuoka Universities, launched in 2016, is FWU's strategic global initiative to expand its research network with leading universities in ASEAN and the EU. Focusing on research collaboration, CASEUF will implement various projects including joint educational programs to encourage student mobility among member universities and staff training programs to create personal connections between administrators. Through these projects, CASEUF will enhance people-to-people exchange and forge a strong academic network encompassing all members of the university community.

# International Programs

## Outbound

### Exchange Programs

Exchange programs with our partner universities offer students study-abroad opportunities ranging from six-months to one year. A maximum of 30 credits earned at partner institutions may be transferred to meet graduation requirements at FWU, subject to approval. Students who pay tuition at FWU do not have to pay fees at partner universities, so the only costs involved are round-trip airfare and living expenses, which in many cases are lower than in Fukuoka. In general, a TOEFL (PBT) score of 500 to 550 or higher is required.

### Field Study Programs

This is an experiential learning opportunity in which students develop their sociability, international understanding and independence, while deepening their self-awareness, in the process of working with community residents on various projects overseas.

#### [Sri Lanka “Exploring Development” Program]

This program examines the history of international development cooperation. Students formulate their own ideas on international development cooperation in the context of globalization and offer their own approaches.

#### [Food and Environment in the Globalized Society (USA)]

A two-week summer program to study food and the environment in the US. The program consists of language courses, lectures and site visits. In the food program, students visit a hospital and a retirement home to observe registered dietitians (RDs) at work in the US and to learn from their expertise. A homestay program allows students to experience a typical home diet. In the environment program, students learn about environmental problems and public efforts to solve them in the US, while visiting a recycling facility, eco-village, organic farm, national park and other sites.

#### [Asian Food Culture Program “EAT”]

A two-week summer program that takes a broad look at Asian food cultures. This program is jointly organized by FWU, Mahidol University, and Ewha Womans University. Students will study at FWU for one week and at either of the two partner universities for the second week. University students examine food culture in Asia from a practical standpoint by visiting factories and cooking in addition to attending lectures on food. All lectures are taught in English.

### Language and Culture Programs

A variety of short-term language and cultural training programs are held at official partner universities in spring and summer. Programs include opportunities to meet local students and community residents, enabling participants to learn about the culture as well as the language. Students attend a study program of 30 or more hours for two to five weeks during an overseas stay. Completion of the program is certified as an undergraduate credit.

- Chinese language and culture program (Dong Hwa University)
- Korean language and culture program (Pusan University of Foreign Studies)
- Thai language and culture program (Mahidol University)
- English language and social service program (Ateneo de Manila University)
- French language and Belgian culture program (KU Leuven)
- German language and culture program (University of Munich)
- English language and British culture program (University of Manchester)
- English language and Canadian culture program (University of Prince Edward Island)
- English language and American culture program (University of California, Davis)
- English language and New Zealand culture program (University of Auckland)

### English Village

The English Village is a project that provides FWU students with a simulated study abroad experience. During this period, students are strictly forbidden to speak Japanese, and must use English only in daily life. International students in our short-term study abroad program (WJC) serve as facilitators, leading extracurricular activities, and trading their normal roles as foreign students on campus for the role of tutor to “study abroad students” coming from Japan. Without leaving the country, participants share a simulated experience of studying overseas by taking part in lectures, orienteering, group games, etc., all conducted in English.

## Inbound

### Short-Term International Program

#### WJC

**The World of Japanese Contemporary Culture Program**  
<http://www.fwu.ac.jp/international/wjc.html#wjc>

Recognizing the importance of international education in today’s world, FWU launched the World of Japanese Contemporary Culture Program (WJC) in 2010 as a symbol of the University’s international orientation. WJC is a short-term study abroad program designed to provide a unique educational experience focusing on Japanese culture, with instruction in English. Students may attend the program for one semester or for a full year. The curriculum for the Fall Semester (September-February) focuses more on Japanese contemporary culture, while the Spring Semester (April-August) offers more subjects relating to Japanese traditional culture. Japanese language classes are available at various levels and students can take classes suited to their proficiency.

Various excursions and events such as field-study trips, special lectures by guest speakers, and symposia are organized. The Japanese student buddy program called JD-Mates will provide WJC students the support they need to settle into life at Fukuoka Women’s University (FWU) and also opportunities to socialize with FWU students.

FWU may offer scholarships to exchange students from partner universities based on each university’s exchange agreement.

To apply for WJC, you must be able to provide evidence of your spoken and written command of the English language (TOEFL-PBT score 500+). For the Japanese language and Culture Course module, the level N2 of the Japanese Language Proficiency Test (JLPT) or above is required.

### Summer Study Programs

#### CASEUF Summer Program

<http://www.fwu.ac.jp/international/wjc.html#caseuf>

The CASEUF Summer Program is designed to provide students from the CASEUF member institutions with an introduction to contemporary issues in ASEAN, EU, and Japan, and an opportunity to think about relationships among those regions in the global era. The Program is held early in August with more than 30 students participating (20 from ASEAN and EU; 10 from FWU).

#### EAT

#### Asian Food Culture Program

<http://www.fwu.ac.jp/international/wjc.html#eat>

EAT is a joint summer program organized by Ewha Womans University, Mahidol University, and FWU. In the two-week program, students from the three universities reflect broadly on Asian food cultures, while exploring traditional and modern Asian cuisine and culture through field trips and special lectures all taught in English in Thailand, South Korea, and Japan.



# International Friendship House — Nadeshiko

A shared dormitory lets international and Japanese students experience everyday life in a global setting. All students live in residence during their first year, and international students stay in the dormitory for four years.

- The dormitory provides an educational environment where Japanese and international students deepen their understanding of other cultures while becoming well-rounded individuals and members of society.
- Students help manage the dormitory as floor leaders and Nadeshiko Mates.

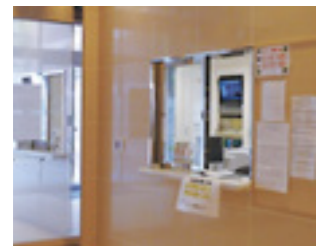
All students live in the International Friendship House Nadeshiko during their first year, and international students remain in the dormitory for four years. Each apartment is typically shared by three Japanese and one international student in a communal living arrangement that lets students develop strong relationship-building skills, understanding of other cultures, and proficiency in foreign languages. Life in residence exposes students to diverse values and ways of thinking and offers exciting intercultural experiences every day. International Friendship House Nadeshiko plays an important role in educating highly motivated and skilled women at FWU.

- \* Floor leaders: First-year students who help sort out problems, plan events, and maintain communications in the dormitory.
- \* Nadeshiko Mates: Students in their second year and above who provide support for daily life in residence.

## Facilities and Layout



Entrance



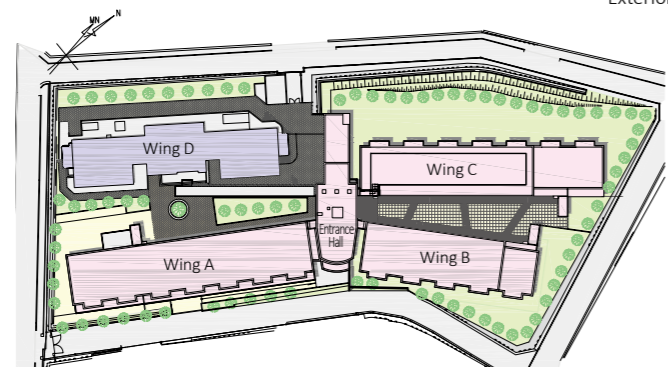
Staff office



Laundry room



Exterior



Common kitchen



Dining room

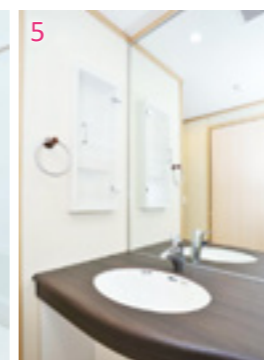


Mail boxes

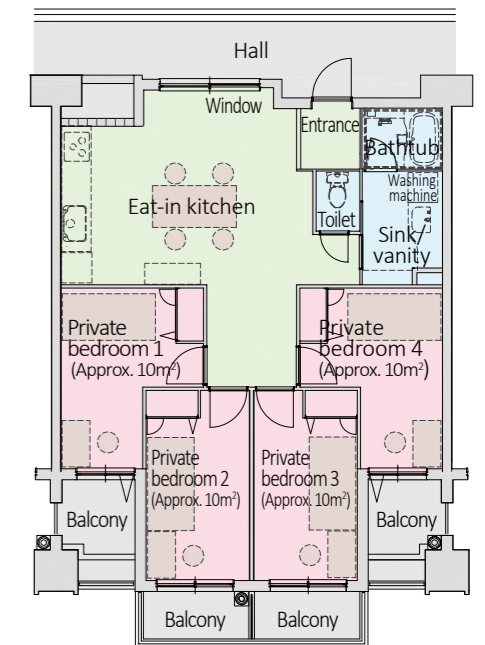
## Dormitory Management

Management Staff	Management staff are on hand 24 hours a day, inspecting the dormitory both inside and out, distributing mail, greeting visitors, handling emergencies, arranging use of common spaces and equipment, and checking on the whereabouts of residents.	
	Duties	<ul style="list-style-type: none"> <li>• Distributing mail</li> <li>• Confirming that students are in residence</li> <li>• Managing student health</li> <li>• Greeting parents and visitors</li> <li>• Handling rental and distribution of bedding</li> <li>• Dealing with equipment problems in the dormitory</li> <li>• Moving in/moving out procedures</li> <li>• Other dormitory matters</li> </ul>
Nadeshiko Mates	Nadeshiko Mates help plan dorm events and offer counseling and advice on student issues. Students in their second year or above can apply for these positions.	
Dormitory Education Committee/Student Support Team	Carries out overall management and operation of the residence, including educational programming and room assignments. Students can consult freely with members of the team about any problems experienced on campus.	
Health Office and Student Counseling Room	A Student Counseling Room and Health Office are set up on campus to manage students' mental and physical health. Students can use the facilities when they are depressed or troubled by problems in their studies, personal lives or relationships.	
Security Office	Security guards are on duty 24 hours a day at the Security Office in front of the university's main entrance.	

## Layout of apartments and amenities provided



## Layout



- 1 Eat-in kitchen**  
Bright and open eat-in kitchen (approx. 26m<sup>2</sup>) is fully equipped with large kitchen area/sink, IH stove, and other amenities. Roommates can enjoy preparing and eating meals together.
- 2 Private bedroom**  
There are four separate bedrooms, each facing a balcony. The layout ensures that students have private time for studying or other activities.
- 3 Balcony**  
Each of the four rooms has its own balcony.
- 4 Bathtub**
- 5 Sink/vanity**  
The sink/vanity area has a large mirror and wide countertop.
- 6 Four individual cabinets**  
The detailed design features individual cabinets and drawers for each resident.
- 7 Four shoe cupboards**

## Dormitory Information

Fees	<ul style="list-style-type: none"> <li>• Regular Students                     <ul style="list-style-type: none"> <li>- ¥15,000 per month (includes ¥5,100 room fee, ¥9,900 utilities, internet connection fee, activities and maintenance and cleaning fee, ¥6,300 utilities, and internet connection fee)</li> <li>- Paid-in-advance cleaning fee ¥16,500</li> <li>- Bedding can be rented for an additional fee upon request</li> </ul> </li> <li>• Exchange Students                     <ul style="list-style-type: none"> <li>- ¥9,900 per month (all inclusive)</li> <li>- Paid-in-advance cleaning fee ¥16,500</li> <li>- Bedding can be rented for an additional fee upon request</li> </ul> </li> </ul>
Capacity	340 (Four people per unit). 4DK (4 private bedrooms, shared eat-in kitchen, bathroom, toilet) x 85 units (6-floor building) Wings A-C
Floor area	<ul style="list-style-type: none"> <li>• Private bedroom approximately 10 m<sup>2</sup></li> <li>• Each unit approximately 82.40 m<sup>2</sup></li> </ul>
Facilities	<ul style="list-style-type: none"> <li>• Private bedroom: Air-conditioner, desk (with light and bookshelf), chair, closet, bed (with storage space), internet access, balcony (clothesline and clips)</li> <li>*Residents are requested to provide their own blankets, pillows and other bedding, but these may be rented for a fee.</li> <li>• Common area: (Shared by four people) Kitchen (IH stove, sink, refrigerator, IH rice cooker, microwave, electric hot pot, kettle, kitchen table, etc.), bathtub (with shower), air conditioner, sink/vanity, toilet, washing machine, vacuum cleaner, umbrella stand, shoe cupboard, extension phone, etc.</li> <li>• The dormitory also has a large tatami room, meeting rooms, common kitchen, shower room, laundry room, and other shared facilities.</li> </ul>
Meals	Students prepare their own meals. The student cafeteria is open weekdays from 11:30 to 19:00 (closed from 14:00 to 17:00). The student coop J Shop is open weekdays from 8:10 to 18:10.
Management and Security	The security system includes auto-lock doors and card keys for the main entrance, security cameras and personnel. Management staff are always on the premises.



# Facts and Figures

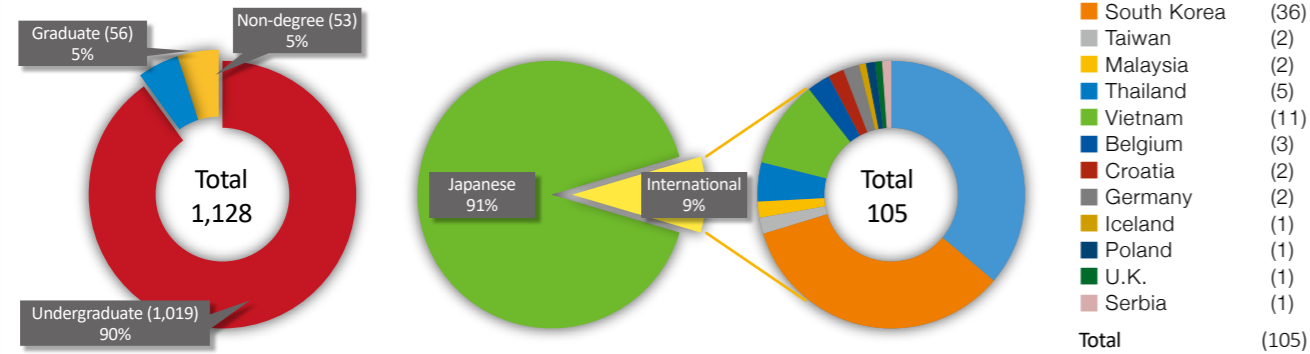
## FWU in the THE Japan University Rankings 2023

45th Overall

10th International Outlook

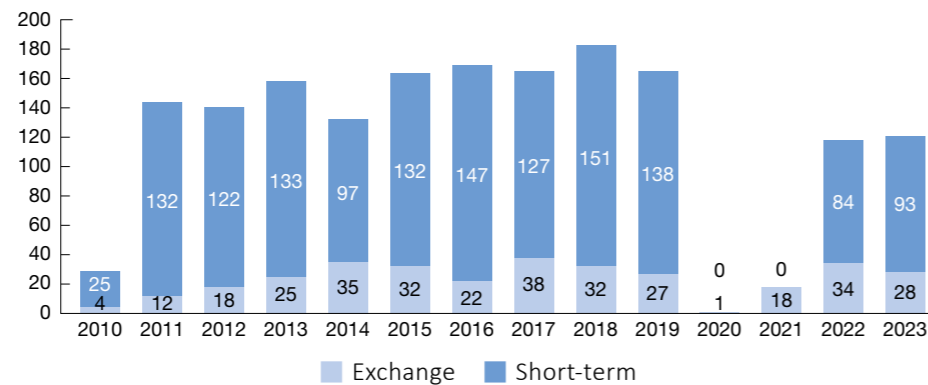
2nd Women's Universities

## Student Demographics (As of May 1, 2023)



## Outbound Students

Exchange Programs and Short-term Programs (1-4 weeks)



## Enrollment As of May 1, 2023

### International College of Arts and Sciences

Department	1st Year	2nd Year	3rd Year	4th Year	Total
International Liberal Arts	133	137	152	158	580
Environmental Sciences	77	69	72	75	293
Food and Health Sciences	37	36	37	36	146
<b>Total</b>	<b>247</b>	<b>242</b>	<b>261</b>	<b>269</b>	<b>1,019</b>

### Graduate Schools

Graduate Schools	Programs	1st Year	2nd Year	3rd Year	Total
Graduate School of Humanities and Social Sciences	Master's Program in Language and Culture	4	6	0	10
	Doctoral Program in Language and Culture	0	1	4	5
	Master's Program in Social Sciences	6	3	0	9
	Doctoral Program in Social Sciences	2	0	2	4
	<b>Total</b>	<b>12</b>	<b>10</b>	<b>6</b>	<b>28</b>
Graduate School of Health and Environmental Sciences	Master's Program in Health and Environmental Sciences	8	12	0	20
	Doctoral Program in Health and Environmental Sciences	3	1	4	8
	<b>Total</b>	<b>11</b>	<b>13</b>	<b>4</b>	<b>28</b>

## Academic and Administrative Staff As of May 1, 2023

Academic Staff						Administrative Staff		
Professors	Associate Professors	Lecturers	Assistant Professors	Research Associates	Total	Permanent	Fixed-term	Total
33 (5)	31 (3)	13 (6)	4 (1)	6 (0)	87 (15)	31 (1)	38 (1)	69 (2)

Numbers of included foreign employees in parentheses

## Tuition and Fees

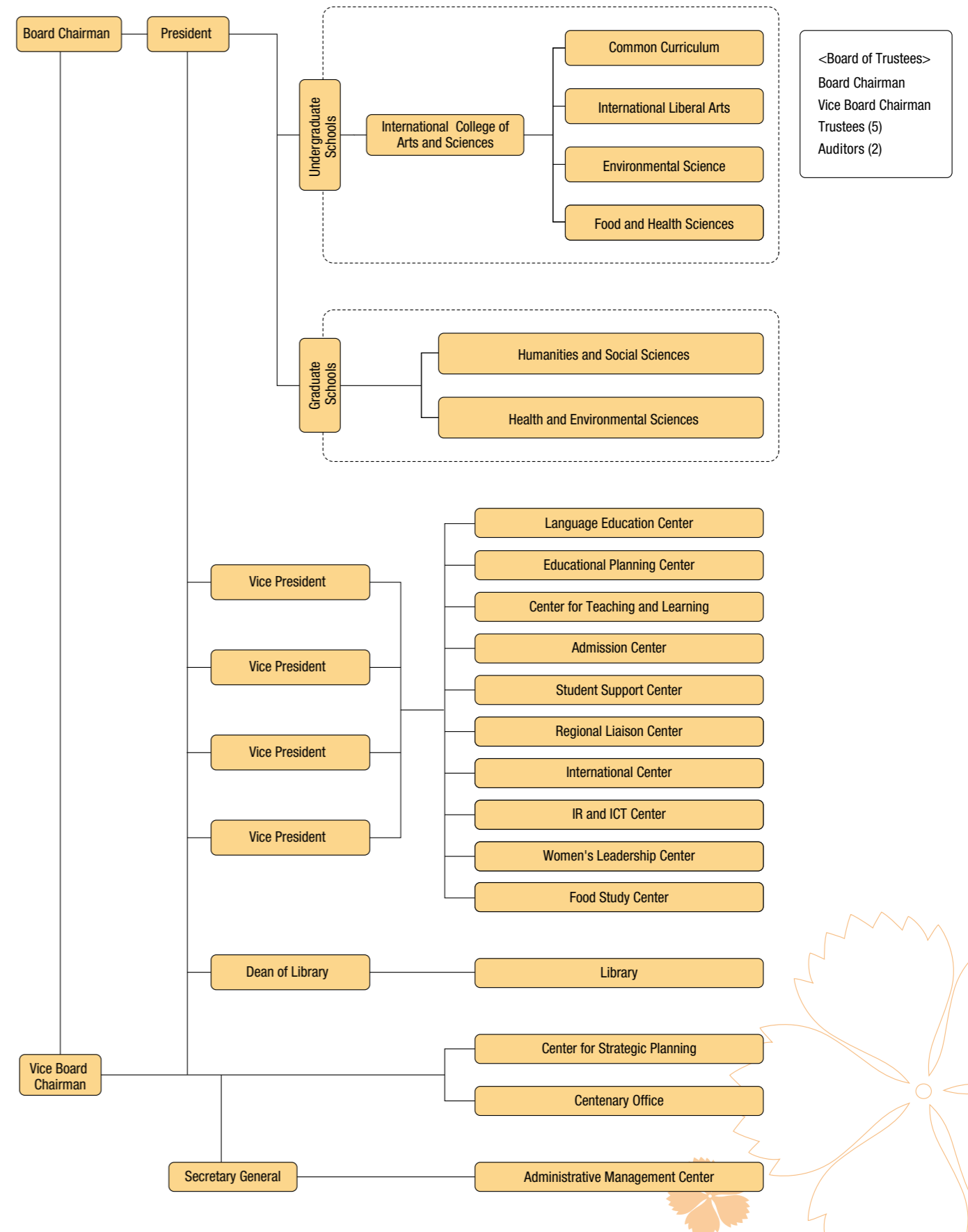
### Admission Fee and Tuition

	Students from Fukuoka Prefecture	Students from outside the prefecture
Admission Fee	282,000 Yen	520,000 Yen
Tuition (Tuition for the 1st Half)	535,800 Yen (267,900 Yen)	535,800 Yen (267,900 Yen)
<b>Total</b>	<b>817,800 Yen</b>	<b>1,055,800 Yen</b>

### Other Fees

Supporters Association Fee (Initial Fee)	40,000 Yen
Supporters Association Fee (Annual Fee)	10,000 Yen
Insurance (4 year period)	4,010 Yen (International Liberal Arts and Environmental Sciences) 4,080 Yen (Food and Health Sciences)
Dormitory Fee (1st year only)	194,300 Yen
Students' Union Membership Fee (4 year period)	15,000 Yen

# Administrative Organization



<Board of Trustees>  
Board Chairman  
Vice Board Chairman  
Trustees (5)  
Auditors (2)

# Campus



## Access

\*The time required is for daytime normal service. It does not include transfer or waiting times.

